

## Locate wires and cables with the LKZ-720 Wire Tracer

### Main features

- detection of wires and cables (live or not)
- tracing underground cables
- tracing conductive water and heating pipelines
- flow and accurate locating the object
- phase detection mode
- operation in wide range of rated voltage, up to 500 V RMS
- five modes of wire tracer operation - voltage, current, current-voltage, power and clamp
- additional accessories enable precise localization - such as contact or non-contact probes and measurement clamp

### ...and much more

- the function 3D in the receiver - detecting the direction of current
- receiver operation with four transmitters at the same time to locate interruptions or distinguish wires
- a LED bright torch
- headphone socket in receiver
- screens backlight for work in dark
- transmission battery status and settings of the transmitter to the receiver
- measurement of voltage at the object to 500 V RMS
- three levels of transmitter amplification
- automatic or manual selection of transmitter operation modes
- software upgrade via USB

**LKO-720**  
receiver



LKO-720

**CAT III**

**600 V**



LKO-720



LKN-720



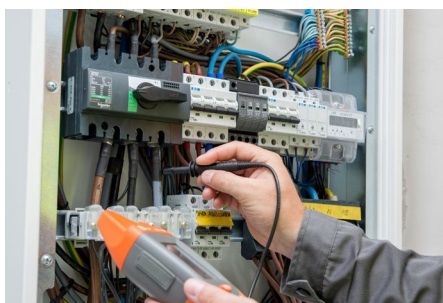
**LKN-720**  
transmitter



## Application

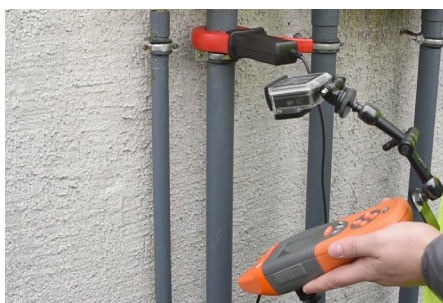
### Detection and tracing cables in ceilings, walls and floors

In response to the needs of customers, the LKO-720 has a specially designed 3D antenna that raises the precision of the wire tracing. Determine direction of wires in concrete up to 5 cm will not be a problem now.



### Locating power points and switches in buildings

pulse generated by a LKN-720 transmitter with a specific frequency allows to locate and identify sockets and switches in energized and de-energized circuits.



### Identification of fuses on the distribution board

Thanks to the precise sensor in LKO-720 and additional contact and non-contact probes, identify of breakers and fuses now will be easily and time-saving.



### Possibility to tracing in no access conductors

LKO-720 with C-8 clamp used in the current mode or in other mode forcing current, allows to uniquely identify wire or cable with a forced current signal.



### Non-contact detection of live cables

LKO-720 allows to precisely detect energized wires in air and concrete without additional probes.

## Additional areas of use

- detection of breaks in cables and wires
- locating short circuits between leads
- tracing shielded cables
- tracing cables in metal ducts
- tracing underground cables
- tracing conductive water and heating pipelines

## Technical specification

insulation type	double, acc. to EN 61010-1	
transmitter measurement category	III 600 V acc. to EN 61010-1	
transmitter ingress protection rating acc. to EN 60529	IP67	
receiver ingress protection rating acc. to EN 60529	IP40	
transmitter power supply	4 x AA alkaline batteries or 4 x Ni-MH rechargeable batteries	
maximum transmitter operating voltage	500 V RMS	
maximum depth of the analysed object	("I" mode) 2 m	
maximum range of contactless neon probe	in air	50 cm
	in concrete	5 cm
receiver power supply	9 V 6LR61 alkaline battery	
operating temperature	-10°C...+50°C	

## Standard accessories



**LKN-720 transmitter**  
WMGBLKN720



**LKO-720 receiver**  
WMGBLKO720



**M-6 carrying case**  
WAFUTM6



**Test lead with banana plugs; 1 kV; 1.2 m; red**  
WAPRZ1X2REBB



**Red crocodile clip 1 kV 20 A**  
WAKRORE20K02



**Test probe with banana socket; 1 kV; red**  
WASONREOGB1



**Test lead with banana plugs; 1 kV; 1.2 m; blue**  
WAPRZ1X2BUBB



**Blue crocodile clip 1 kV 20 A**  
WAKROBU20K02



**Test probe with banana socket; 1 kV; blue**  
WASONBUOGB1



**Test lead with banana plugs on reel; 1 kV; 20 m; red**  
WAPRZ020REBBSZ



**Earth contact test probe (rod) 25 cm**  
WASONG25



**Non-contact probe**  
WASONBDOT



**Mini-USB cable**  
WAPRZUSBMNIB5

## Optional accessories



**N-1 transmitting clamp**  
WACEGN1BB



**C-8 clamp**  
WASONCEG8



**C-3 clamp**  
WACEGC3OKR  
**C-3 clamp adapter**  
WAADALKOC8



**Double-wire test lead 2 m for N-1 clamp (banana plugs)**  
WAPRZ002DZBB



**Magnetic voltage adapter black / blue**  
WAADAUMAGKBL  
WAADAUMAGKBU



**WS-05 adapter with UNI-SCHUKO angular plug**  
WAADAWS05



**Pin probe, black 11 kV (banana socket)**  
WASONBLOGB11



**Contact probe**  
WASONDOT



**Universal magnetic hanging strap**  
WAPOZUCH6  
**M1 hanging hook straps**  
WAPOZUCH1